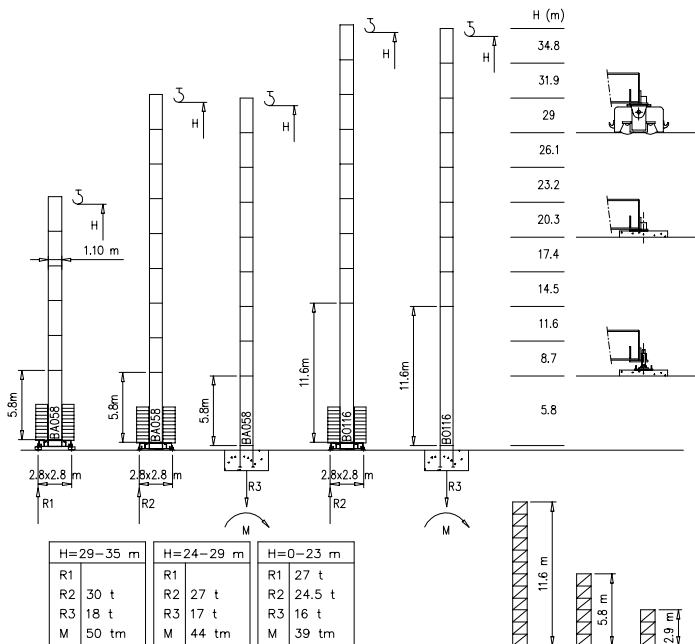


- S1100 - 1.10x1.10 m
- S1210 - 1.21x1.21 m
- * V15.40 - S15.40 - V20.60

Torre/Reazioni – Masts/Reactions – Mat/Réactions – Maste/Eckdrücke – Mástil/Reacciones – Tramo/Reacções

S1100

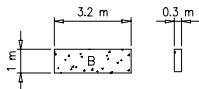
20 m → 35 m



Peso zavorra – Ballast weight – Poids du lest – Ballastgewicht – Peso de lastre



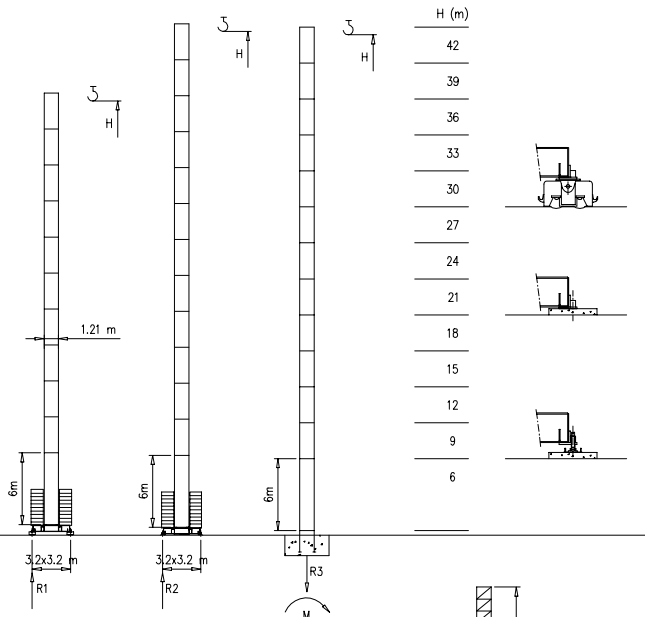
H	n*	Tot.
0–12 m	14 B	30800 kg
13–30 m	18 B	39600 kg
31–35 m	20 B	44000 kg



Torre/Reazioni – Masts/Reactions – Mat/Réactions – Maste/Eckdrücke – Mástil/Reacciones – Tramo/Reacções

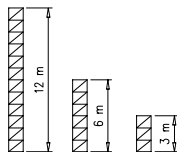
S1210

20 m → 35 m



H=24–42 m	
R1	
R2	47.5 t
R3	62 t
M	106 tm

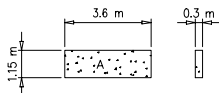
H=0–23 m	
R1	25 t
R2	25 t
R3	16 t
M	39 tm



Peso zavorra – Ballast weight – Poids du lest – Ballastgewicht – Peso de lastre

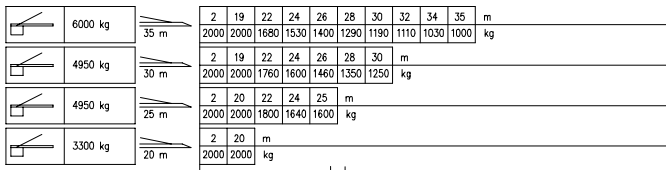


H	n°	Tot.
0–24 m	12 A	36000 kg
25–36 m	16 A	48000 kg
37–42 m	18 A	54000 kg

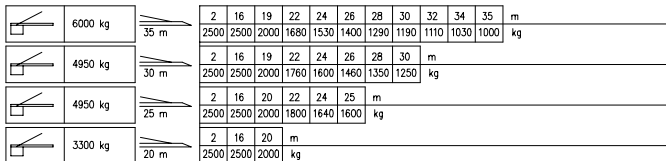


Curve di carico - Courbes de charges - Load diagrams - LastKurven - Curvas de cargas

Pmax 2000 kg



Pmax 2500 kg

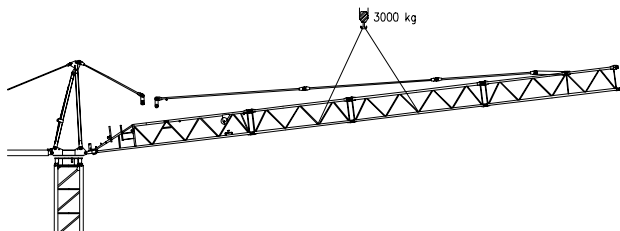
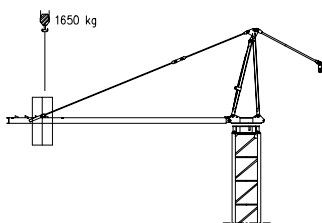
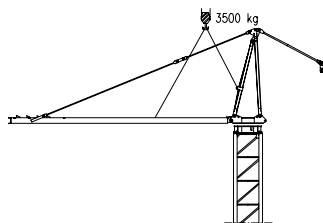
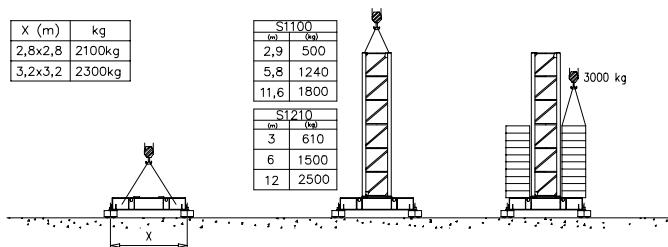


Montaggio – Montage – Erection – Montage – Montaje – Montagem

X (m)	kg
2,8x2,8	2100kg
3,2x3,2	2300kg

S1100	
(m)	(kg)
2,9	500
5,8	1240
11,6	1800

S1210	
(m)	(kg)
3	610
6	1500
12	2500



Meccanismi – Mechanisms – Mécanismes – Antriebe – Mecanismos

Sollevamento S9.30 e V10.30 Hoisting Levage Heben Elevaci3n Eleva7ao			1a 4 m/min 2000 kg	7 kW	S9.30
			2a 16 m/min 2000 kg		V10.30
			3a 32 m/min 1000 kg		13 kVA
Sollevamento S15.40 e V15.40 Hoisting Levage Heben Elevaci3n Eleva7ao			1a 4 m/min 2500 kg	11 kW	S15.40
			2a 20 m/min 2500 kg		21 kVA
			3a 40 m/min 1200 kg		V15.40 19 kVA
Sollevamento V20.60 Hoisting Levage Heben Elevaci3n Eleva7ao			1a 7 m/min 2500 kg	14.7 kW	V20.60
			2a 28 m/min 2500 kg		23 kVA
			3a 56 m/min 1200 kg		
Carrello Trolleying Distribution Katzfahren Distribuci3n Distribui7ao			1a OP 5 m/min 2500 kg	1.5 kW	Potenza elettrica necessaria Puissance électrique nécessaire Necessary electric power Anschlusswert Potencia
			2a 17 m/min 2500 kg		
			3a 34 m/min 1000 kg		
Rotazione Slewing Orientation Schwenken Orientaci3n Rota7ao			1a 0 → 0.2	2.2 kW @ 1200rpm	
			2a 0 → 0.5		
			3a 0 → 0.8		
Traslazione Travelling Translation Kranfahren Traslaci3n Trasl7ao			1a 0 → 20	3.7 kW	

Rete elettrica – Réseau – Mains supply – Netzstrom – Red – Rede electrica

400V – 50 Hz



FMgrù s.r.l.

via Emilia 11-29010 Pontenure PC ITALY
tel. 0523/510446 ric.cab. fax 0523/510365
www.fmgrù.com e-mail: info@fmgrù.com

FEM 1.001
2000/14/CE



Documento commerciale non contraffatto
Per tutte le informazioni tecniche riferirsi
alle corrispondenti istruzioni

Unverbindliches Vertriebsdokument.
Für technische Informationen, siehe die
entsprechenden Anweisungen.

This commercial document is not legally
binding. For any technical information, please
refer to the corresponding instructions.

Documento comercial no contraffatto
Para cualquier informaci3n t3cnica,
ver la notici3 correspondiente.

Code:	15ICA37C2DA0
Edi	Date
1	05.06.03 05.06.03